

RIGrunner 4005i



RIGrunner 10010i Rackmount



www.westmountainradio.com

1020 Spring City Drive

Waukesha, WI 53186

262-522-6503

sales@westmountainradio.com

©2020 West Mountain Radio, All rights reserved. All trademarks are the property of their respective owners.

Thank you for choosing the RIGrunner 4005i or 10010i with Internet and WIFI capabilities. The RIGrunner 4005i is a sophisticated 12 VDC power controller and distribution system, intended for use in remote-control applications. Any reference to 4005i also applies to the 10010i unit. The RIGrunner 4005i allows EMCOMM and Repeater operators the ability to monitor and control the power distribution of their systems from any PC or Internet-ready mobile device.

**PLEASE READ THESE INSTRUCTIONS
CAREFULLY BEFORE
SETTING UP AND USING THE RIGrunner 4005i.
10010i REQUIRES EXTERNAL FUSE OR CIRCUIT
BREAKER ON SUPPLY CONNECTIONS**

Mounting Location

Consider a location that gives easy access and is easy to see. The location should be close, or central, to most of the equipment; especially those that draw large amounts of current. Locate the power source in close proximity to the RIGrunner, remembering every wire has resistance, and longer wires have more resistance. Understand that #10 cable of 10 feet or more will not allow for adequate full output supply to the RIGrunner without a significant voltage drop.

Install in a cool, dry place with good ventilation. Do not place on top of an amplifier or room heater and do not cover the unit. It is recommended to not place in the engine compartment of a car, or directly on the floor within the car, as water from rain or snow may damage the unit.

Connecting to Equipment

RIGrunners come standard with Anderson Powerpole®. Powerpole® connectors are genderless and the same connector arrangement works for both supply and load. Consider updating all cables that supply or use 12VDC to use Powerpole® connectors for quick, convenient connections to equipment.

Assembly of Powerpole® to cables should follow the amateur radio standard also used by RIGrunners. Powerpole® may be installed by soldering or crimping. Powerpole® general installation instructions can be found at www.westmountainradio.com/Powerpoleinstall or view the video presentation on PWRcrimp Tool and Powerpole®.

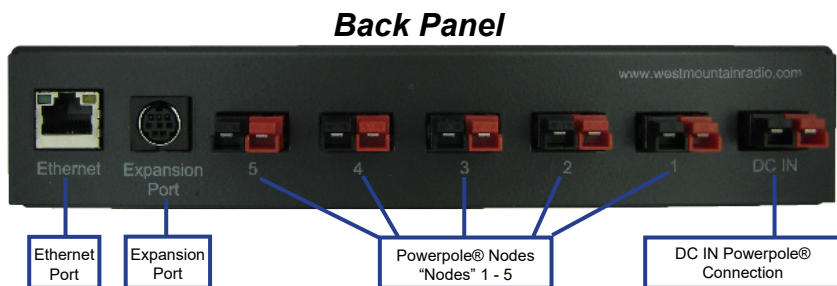
IMPORTANT: Be sure that assembly of the pairs is correct. ALWAYS verify that **RED+PLUS** and **BLACK—MINUS** is correct.

Back Panel Descriptions

The far right connector is DC IN for input of a power supply or battery. It is recommended to plug in equipment with the highest power consumption to start at Powerpole® Node 1 and continue down the Powerpole® nodes for lower drain units. Typically 12V input amplifiers and 100W RF output transceivers should be near Node 1, VHF radios in the middle nodes, and smaller accessories in Nodes 4 and 5. All Powerpole® nodes have software adjustable fuses. Fuse configuration and adjustment procedures discussed in a later section of this manual.

Expansion Port connector is an 8-pin MiniDIN and allows for future accessories from West Mountain Radio such as antenna rotor control, CI-V, and daisy-chain of equipment. Details on the expansion port pins and configuration is discussed later in this manual.

Ethernet Port connector is a standard RJ45 jack to connect the RIGrunner 4005i to any Internet connection or router.



Front Panel Description

LCD – view operational status.

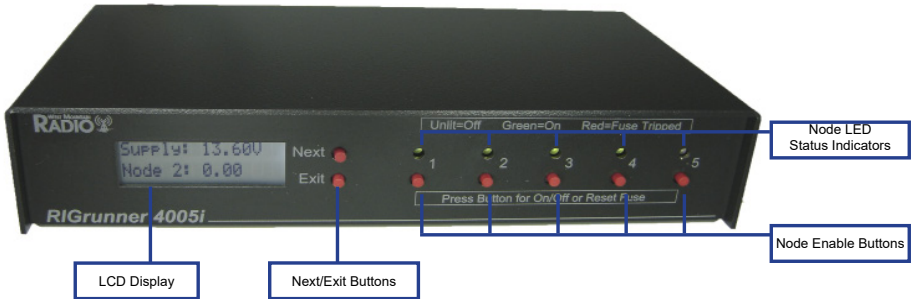
Next/Exit Buttons – operation for LCD display

Node LEDs – The LED above the button indicates the current state of that powerpole:

- **Unlit** – Powerpole® node is not active and no power is being supplied to the node.
- **Green** – Powerpole® node is active and power is being supplied to the node.
- **Red** – The soft fuse has blown, or voltage is too high/low and no power is being applied to the node.

Node Enable Buttons – button press will toggle the ON/OFF state of each node or Reset Fuse.

Front Panel



Node Enable and Soft Fuses

Each Powerpole® node has a toggle button to enable/disable node. Pressing the corresponding button will toggle the ON/OFF state of the Powerpole® node. The LED above the button indicates the current state of that Powerpole®.

The ON/OFF state is stored in program memory and retained if power is lost to the RIGrunner.

Each node has a “soft fuse”, meaning that it is a user configurable setting. The fuse value can be configured from the web browser over a network connection. If the soft fuse has been blown, the Node Enable Button must be pressed twice to return to ON status. **NOTE:** The first button press clears the alarm and the second button press enables the node.

Status Screen

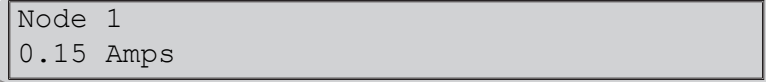
The LCD status screen shows operational status of the unit. If left alone, the unit will scroll through displaying measurements of all nodes and the DC supply.

Pressing NEXT button will cause the unit to stop scrolling and manually scroll to the next screen to display. Pressing EXIT will return back to scrolling mode.

The LCD status screen and the NEXT and EXIT buttons generally are used to view unit information and settings. In order to configure the

unit, the user must use a web browser over the network or the USB connection with a computer.

Status Mode:



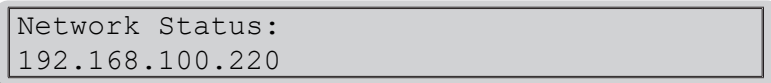
```
Node 1
0.15 Amps
```

Figure 1 - status mode screen

The top line displays the user configured name for this node or power supply. The bottom line displays the status of one node at a time for a few seconds before scrolling to the next node. If the node is enabled, it will display the load (in Amps) drawn from that node. If the node is disabled, it will display OFF in that position.

The LCD status screen will continue to display a screen until the NEXT or EXIT button is pressed. If NEXT is pressed it will display the next status screen. If EXIT is pressed, it will return to the scrolling status mode.

Network Status Screen: Press NEXT past each node status to view the network status information.



```
Network Status:
192.168.100.220
```

Figure 2 - network status screen

In this screen, the second line gives the current network status, and has the following possible values:

- *Not Connected* – No network connection is found. If using Ethernet, verify that a good Ethernet cable has been connected from a hub/PC to the RIGrunner. If using Wifi, verify that all of the WIFI SSID and security settings are valid for the WIFI router.
- *DHCP Not Bound* – A network connection has been found, but no IP information has been sent by a DHCP server. More information about this is detailed in the Networking section of the RIGrunner manual.
- *IP Address* – An IP address is a set of 4 numbers, with each number separated by a ‘.’. This number represents the address on the network, and is the address that can be open with a web browser. More information about this is detailed in the Networking section of the RIGrunner manual.

DHCP Status Screen: Press NEXT when viewing the Network Status Screen to view the DHCP client configuration information.

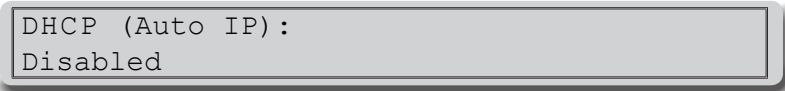


Figure 3 – DHCP status screen

This screen displays the current DHCP client configuration. DHCP is a protocol that allows for auto IP address configuration. If enabled, the RIGrunner will attempt to talk to a DHCP server to get IP address configuration automatically. In order to enable this, there must be a DHCP server on the network. Most modern routers have DHCP support. Additional information and details are discussed in the Networking section of this manual.

HTTP Port Screen: Press NEXT when viewing the DHCP Status Screen to view the HTTP Port web browser information.

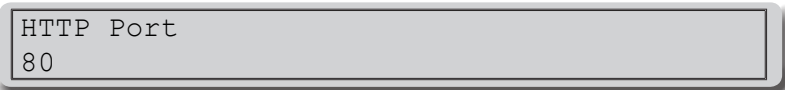


Figure 4 – http port screen

The HTTP port is the TCP/IP port that the RIGrunner’s webserver is using for web browser connections. The default port used by all web browsers is 80. But in order to route or use port-forwarding on some router configurations, it may be required to change this port. More information about this is detailed in the Networking section of this manual.

DHCP Toggle, WIFI Networking Mode Toggle and Factory Reset

DHCP Toggle

By holding down the NEXT and EXIT buttons for 5 seconds the RIGrunner will start a special menu that allows the user to toggle the

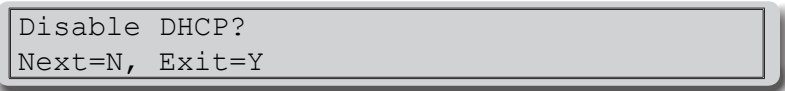


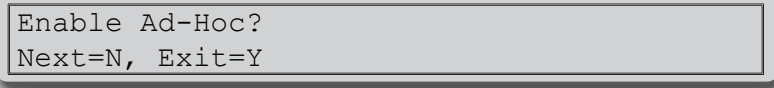
Figure 5 – DHCP toggle screen

DHCP setting or perform a factory reset.

Figure 5 shows the DHCP toggle screen, and is the first choice shown after holding down the NEXT and EXIT buttons for 5 seconds. Pressing the EXIT button will toggle the existing value of the DHCP client configuration and then return to normal operation. This only toggles the DHCP client configuration of the RIGrunner. Refer to the manual of the router in use to adjust the DHCP server configuration.

WIFI Networking Mode Toggle

If you are using a WIFI version of the RIGrunner 4005i, pressing the NEXT button on the *Figure 6* screen will bring up the WIFI networking mode screen as shown in *Figure 6*. If you are not using a WIFI RIGrunner 4005i you can skip to *Figure 7*.



```
Enable Ad-Hoc?  
Next=N, Exit=Y
```

Figure 6 – WIFI networking mode toggle screen

Figure 6 shows the WIFI networking mode toggle screen. The RIGrunner 4005i can either be placed into Ad-Hoc mode or Infrastructure mode. The differences between these two modes are documented in the section labeled WIFI Networking.

If Ad-Hoc networking mode is enabled, the first line of *Figure 6* will say 'Disable Ad-Hoc?'. Pressing the EXIT button will set WIFI networking mode to Infrastructure. A reboot of the RIGrunner is required for this change to have effect.

Factory Reset

If Infrastructure networking mode is enabled, the first line of *Figure 6* will say 'Enable Ad-Hoc?'. Pressing the EXIT button will set WIFI networking mode to Ad-Hoc. A reboot of the RIGrunner is required for this change to have effect. Pressing the NEXT button on the *Figure 6* screen will go to the Factory reset screen as shown in *Figure 7*.

Factory Reset: Press the NEXT button to advance the toggle of DHCP screen to Factory Reset screen.

```
Factory Reset?  
Next=N, Exit=Y
```

Figure 7 – Factory reset screen

Press the EXIT button will perform a factory reset.

Press the NEXT button to bypass performing a factory reset and return the unit to normal operating mode. Below is a list of the initial values that will be set if a factory reset is performed.

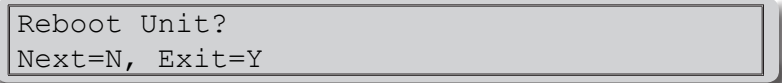
NOTE: Toggling the DHCP client or performing a factory reset requires a power-cycle in order to take effect.

Factory Defaults:

- DHCP client: Enabled
- IP Address: 192.168.100.220
- Netmask Address: 255.255.255.0
- Gateway Address: 192.168.100.1
- HTTP Port: 80
- HTTP does not require login
- Admin user named 'admin' with password 'admin'
- Control user named 'control' with password 'control'
- All scheduled events removed
- Node descriptive strings are clear
- Device String: RR4005i
- Expansion port pins set to high impedance
- All soft fuses set to 40A
- WIFI SSID: MY_WIFI
- WIFI networking mode: Infrastructure
- WIFI channels used: All
- WIFI security mode / encryption: Open (none)
- E-mail server configuration cleared
- All e-mail alerts disabled

Rebooting the Device

By holding the EXIT button down for 3 seconds, the device will prompt if you want to reboot (reset) the device:



```
Reboot Unit?  
Next=N, Exit=Y
```

Figure 8 – Reboot prompt screen

Pressing the NEXT button will ignore the request and the unit will operate normally. Pressing the EXIT button will cause the unit to be rebooted. A reason for wanting to reboot the unit is to load new or changed network settings.

WIFI Networking Configuration

Ad-Hoc vs Infrastructure

The RIGrunner 4005i can be placed in two different WIFI networking modes: Ad-Hoc or Infrastructure. Infrastructure is the more common WIFI networking mode, where all WIFI devices on the network connect to one WIFI access point (aka AP, gateway or router). With Infrastructure mode several devices can be connected to one network. Ad-Hoc mode is a peer-to-peer network connection that can only be shared between two devices. The most common use of Ad-Hoc is a direct connection between two computers or between a smart phone and another device.

When the RIGrunner 4005i is using Infrastructure mode, the RIGrunner 4005i acts like a common TCP/IP client. In this mode the TCP/IP settings, such as IP address or DHCP, needs to be configured to match the network that the RIGrunner 4005i is to join. See the section labeled 'TCP/IP Networking Configuration' for more help on this.

When the RIGrunner 4005i is using Ad-Hoc mode, the RIGrunner 4005i acts more like a server. In this mode the DHCP client setting is ignored, instead the RIGrunner 4005i acts as a DHCP server and will assign IP addresses to clients that connect to the RIGrunner 4005i (if the client has DHCP enabled). Also in the Ad-Hoc mode, the RIGrunner 4005i acts as a DNS server. If the client connecting to the RIGrunner 4005i is using the RIGrunner 4005i as the DNS server, the RIGrunner 4005i will answer all DNS queries and point the result to the RIGrunner 4005i. That means opening a browser to <http://someplace.com> it will open

the web-page on the RIGrunner 4005i. The application of this is, with minimal configuration, a smart phone or client PC can connect to the RIGrunner 4005i and access the web-pages. If the client connecting to the RIGrunner 4005i is using DHCP to get IP configuration, the client will automatically use the RIGrunner as a DNS server.


Configuration of WIFI networking

In order to make the RIGrunner 4005i connect properly to an established Infrastructure network, the RIGrunner 4005i needs to be configured for that network's parameters. The settings that need to be set are the SSID (the unique name of the infrastructure network), the security mode and encryption key. All of these parameters are unique to each network.

These settings can be set on configuration web-page on the RIGrunner 4005i or by using the USB connection on the unit.

WIFI radio frequency region

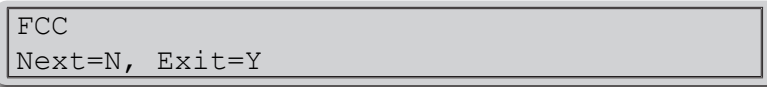
RIGrunner 4005i's are shipped by West Mountain Radio using the FCC radio frequency region. If the RIGrunner 4005i is to be used in a different region then this setting will have to be changed. To change this region the NEXT and EXIT button have to be held down during power-up and then held for over 5 seconds. This will then be displayed on the LCD of the RIGrunner 4005i:



```
Set WIFI Region?  
Next=N, Exit=Y
```

Figure 9 – WIFI region warning screen

Pressing EXIT button on *Figure 9* will cause the RIGrunner 4005i to return to normal operation. Press NEXT button on *Figure 9* will acknowledge the change request, and the LCD on the RIGrunner 4005i will now display:



```
FCC  
Next=N, Exit=Y
```

Figure 10 – WIFI region setting screen

Pressing the NEXT button on *Figure 10* will cycle between the valid radio frequency regions supported by the RIGrunner 4005i. Pressing

the EXIT button on *Figure 10* will cause the selected region to be saved to memory, and the unit will return to normal operation.

Here is an overview of the valid radio frequency regions supported:

- FCC – USA. Channels 1-11 valid.
- IC – Canada. Channels 1-13 valid.
- ETSI – Europe. Channels 1-13 valid.
- JAPANB – Japan full access. Channels 1-13 valid.

Using the factory reset command (detailed in this manual's section labeled 'DHCP Toggle, WIFI networking mode toggle and Factory Reset') will not change this value back to FCC.

If the RIGrunner 4005i is not connecting to the WIFI AP properly, even though it appears all the network settings are correct, verify that the WIFI AP does not have a MAC address filter in place that is blocking unknown WIFI devices from using the network.

TCP/IP Networking Configuration

Using DHCP Client

If the local network being used by the RIGrunner has a DHCP server, it is strongly recommended to enable the DHCP client on the RIGrunner, as it will significantly simplify the network configuration required. The DHCP client of the RIGrunner is enabled by default. Refer to the manual of a gateway, routers or server in use to determine if DHCP is enabled or how to enable a DHCP server on the network.

The DHCP client of the RIGrunner can be enabled using the NEXT and EXIT buttons on the front of the RIGrunner. If DHCP is enabled, the IP address and connection status of the RIGrunner can be viewed in one of two ways:

- View the network status screen on the front of the RIGrunner. (See *Figure 3* of the Status Screen section of this manual)
- View the DHCP client list of the DHCP server. Refer to the DHCP server manual for the router or server PC in use for additional instructions. The default name that will be displayed in the DHCP client list is "RR4005i", but this name can be changed by using the Configure web-page of the RIGrunner.

Using Static IP (no DHCP Client)

If the network being used by the RIGrunner does not have a DHCP server, the static IP configuration of the RIGrunner has to be changed to be compatible with the RIGrunner. For example, if the IP range of the network is 10.0.*.* the IP address of the RIGrunner needs to be changed to a valid number in the range and the netmask needs to be changed to 255.255.0.0. If the IP range of the network is 192.168.100.*, then the factory default settings of the RIGrunner would be valid.

Changing the network configuration of the RIGrunner can only be done through a web browser. Therefore, commonly a PC IP address might need to be temporarily changed to the RIGrunner's factory default 192.168.100.220 network range.

Set-up Network Configuration in Windows 7: (steps are similar for other versions of Windows):

1. See the 'DHCP Toggle and Factory Reset' section in this manual for directions to disable the DHCP client on the RIGrunner.
2. Disconnect PC from any Ethernet networks.
3. Connect an Ethernet cable directly from the PC to the RIGrunner. Most modern PCs will detect this configuration and automatically perform a network crossover. If the PC does not perform this function then an Ethernet crossover cable will have to be used.
4. Open the Control Panel from the Start Menu.
5. Make sure the Control Panel is in 'View by: Category' mode (see top left of Control Panel) and select **View network status and tasks**.
6. Select 'Change adapter settings' on the left side of the screen.
7. Right click on 'Local Area Connection' and select Properties.
8. Left click on Internet Protocol Version 4 (TCP/IPv4) and click on Properties button.
9. The Internet Protocol Version 4 (TCP/IPv4) window should be open. This screen configures the DHCP client or static

IP address of the PC. Before any settings are changed, it is recommended to write down the old values so the PC can be restored back to normal operation after configuring the RIGrunner. Confirm the Use the following IP address button is selected. (Figure 11 window will appear)

- For IP address, enter a value of '192.168.100.221'
- For Subnet mask, enter a value of '255.255.255.0'

10. Click OK to save these settings.

11. Open a web browser to the address 192.168.100.220 to open the RIGrunner web-pages. Select the Network Setup web-page and configure the IP settings (IP Address, netmask, gateway) to be compatible with your network. For example, if the network that the RIGblaster is running on is a range of 10.0.0.*, then an IP Address of 10.0.0.220 would be valid (if not already used on the network) with a netmask of 255.255.255.0. (Figure 14 will appear)

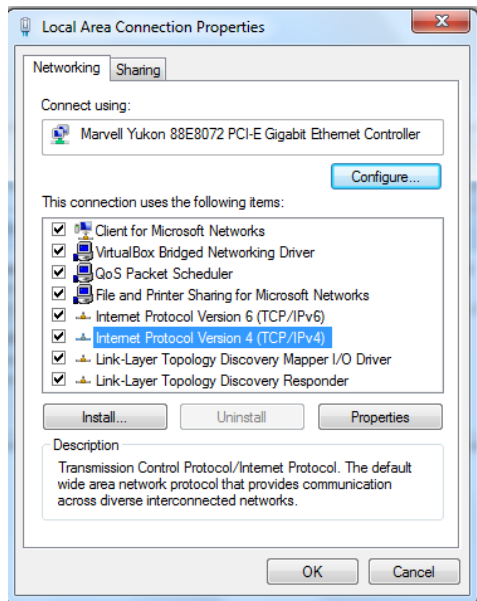


Figure 11

- Click on Save Config button. The new network settings are now saved to the RIGrunner and will be applied on the next power-cycle. Power-cycle the RIGrunner.

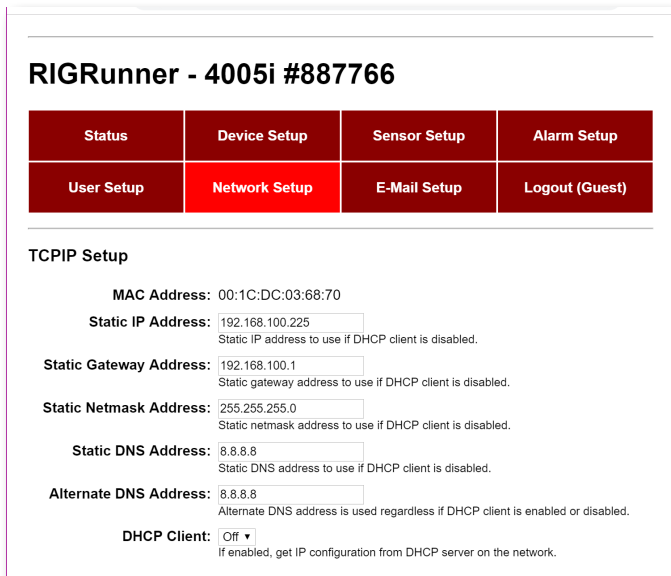


Figure 12

- Open the web browser and using the IP address set in Step 11, verify the setting are correct. The RIGrunner is now accessible from the network.

Web Pages

The status and configuration of the RIGrunner can be viewed remotely using a web browser over the network connection. Each Powerpole® node can also be remotely controlled from a web browser.

Main Web-pages

Here is a summary of what web pages are on the RIGrunner 4005i unit and what they may be used for:

- Main/Status - view power supply status (voltage), view status of each Powerpole® node (enabled, current draw) and turn ON/OFF each node. Download the latest log of alarms.
- Device Setup - Generic device configuration, such as name of the unit, logging, LCD backlight and NTP settings. An MIB file

that can be imported into SNMP MIB browsing software can be downloaded here.

- Sensor Setup - Configure generic controls of the nodes, such as their name or what delay to turn them on at power-up. Configure the scheduled control of nodes.
- Alarm Setup - Nodes: configured the soft fuse point current that the node should be disabled. DC supply: configure a low voltage and/or high voltage disconnect and which nodes should be turned off for those voltage conditions. An alarm can be configured whenever a node is enabled and/or disabled. Each alarm can be individually enabled, as well as configuring if it should send an e-mail, an SNMP trap and/or logged to internal SD memory card.
- User Setup - Configure users and access levels for web and SNMP users. A 'Control' user can turn ON/OFF nodes, configure alarms, view status, etc. An 'Admin' user has the same access level as a 'Control' user, but can edit network settings. The front panel buttons for turning ON/OFF nodes can be disabled or enabled here.
- Network Setup - Configure TCP/IP, WIFI, SNMP and webserver settings. A test SNMP trap can be sent to test your SNMP software.
- E-Mail Setup - Configure E-Mail settings, including SMTP server and periodic interval.

The web pages can be password protected to prevent unauthorized remote access. The usernames/passwords can be set on the User Setup page.

E-mail Alerts

The RIGrunner 4005i can be configured to send e-mail alerts. For example, the RIGrunner 4005i can send an e-mail if one of the fuses has blown. This can be configured on the Alarm Setup web-page.

In order to send e-mails, the RIGrunner 4005i must have access to an SMTP server. An SMTP server is a server on the internet that relays e-mails. The configuration web-page can be used to point the RIGrunner 4005i to a valid SMTP server.

In order to prevent unauthorized access or the relaying of spam e-mails, many SMTP servers have strict rules about who can access the server.

SMTP servers may ignore clients for the following reasons:

- Outside its local network.
- E-mails not destined to someone on its network.
- E-mails not sent from someone on its network.
- Invalid authorization (username and password required).

If the RIGrunner 4005i appears to be configured correctly but no e-mails are being received the configure web-page can be used for debugging. On the configure web-page there is a row labeled 'E-mail Status'. Here are a description of some of the values seen on this row:

- 'Idle' – no attempts to send an e-mail performed since power-up.
- 'Busy' – currently trying to send an e-mail.
- 'OK' – last e-mail appeared to be sent successfully.
- 'Waiting for SMTP to be free' – Many SMTP servers will block an e-mail client if it tries to send too many e-mails in a short time period. To prevent the RIGrunner 4005i from doing this, there is a 3 minute delay between e-mails. If a trigger event occurred within that 3 minute period, that e-mail will be delayed until this period has expired.
- "FAIL, XXX, YYY" – An error occurred on last e-mail. XXX will be a descriptive tag of the problem. YYY is an SMTP result code.

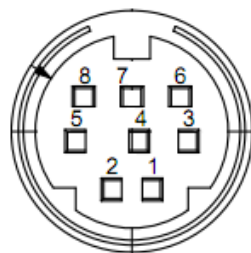
If XXX is 'CONNECT' that means it could not make a TCP/IP connection to the SMTP server. Verify that the E-mail hostname and E-mail port are correct for the desired SMTP server. If using a hostname instead of an IP address (ex someserver.com) then verify that the DNS server setting of the RIGrunner 4005i is correct.

If YYY is not 0, that means the SMTP server responded with an error during the transaction. An internet search of SMTP result codes will give an overview of the many errors that are possible. If presented with an error code, an internet search of that error may yield information as to why the SMTP server is rejecting the e-mail.

Expansion Port

The following pin-out is of the 8-pin expansion port on the back of the RIGrunner:

Pin	Description
1	Supply voltage. This is the same voltage as the supply that is powering the RIGrunner (8 to 15 Volts)
2	Ground
3	Serial output, TTL (3.3V). Can be connected to external drivers (RS232, RS485, etc).
4	Serial input, TTL (3.3V). Can be connected to external drivers (RS232, RS485, etc).
5	Analog output (0 to 3.3V)
6	Analog output (0 to 3.3V)
7	Analog input (0 to 3.3V)
8	Analog input (0 to 3.3V)



The analog output pins are activated by using pulse width modulation (PWM) with variable duty cycle. This can be converted to an analog voltage simply by adding an RC filter.

NOTE: Applying voltage greater than 3.3V to any of the serial, analog output or analog input pins can damage the RIGrunner.

USB Port

The USB port can be used to access a serial configuration terminal to change the network configuration. The USB port can be accessed using the mini-USB port on the circuit board, which can only be accessed by opening the top cover of the RIGrunner. Connect a host PC using the mini-USB receptacle on the RIGrunner and the device will appear to the host as a serial port (COMx) device. Open this serial port in the serial terminal software package (such as Realterm) and use the console GUI for changing the configuration.

The RIGrunner will not get power from the mini-USB receptacle. 12V must be applied to the Powerpoles®.

The easiest way to access this on Windows devices is to download and install the 'WMR Diagnostic Utility' from the West Mountain Radio website: www.westmountainradio.com. After installing and running the tool, a device labeled 'West Mountain Radio RIGrunner 4005i' should be listed as a found device.

Right click on the 'West Mountain Radio RIGrunner 4005i' and then choose 'Test'. This will open a serial terminal, but it will be blank. Pressing

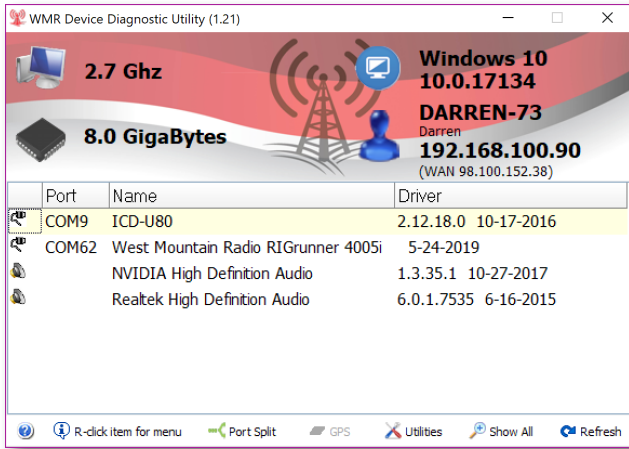


Figure 13

SPACE BAR on your keyboard should then refresh the console GUI:

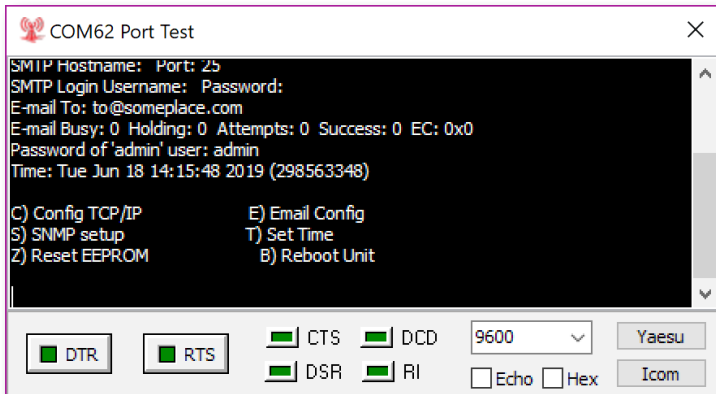


Figure 14

Pressing C will then begin configuration of the network parameters.

Micro SD Port

The RIGrunner can log unit status, either periodically and/or due to an alarm, to a micro SD card inserted by the user. The RIGrunner does not ship with an SD card. To access the SD card receptacle, the top cover of the RIGrunner must be removed. The SD card should be formatted as FAT32.

To test the SD card, set 'Append Now' to 'Yes' on the Device Setup web-page and then press the Submit Values button. Go back to the main status web-page and click on the 'Download Log' link to download the log file from the SD card.

Specifications

4005i

Overall Dimensions (maximum, w/o cables)	1.625" H x 8" W x 5.25" D
Weight	16 oz
Maximum total current	40 amps
Maximum single individual outlet current	40 amps (electronic fuse protected)
Input voltage range	min. 8.0V/ max. 15.5V
Electronic fuse range	min. 0.01A/ max. 40A
Environmental Temperature	-10 to 85°C
Current:	
Max. Total Continuous	40A
Max. Port Continuous	40A
Max Port @ 1 minute	40A
Operating w/Backlight	80mA
Operating no Backlight	70mA
Monitor:	
Voltage Accuracy	+/-2.5%
Voltage Resolution	0.01V
Current Accuracy	+/-2.5%
Current Resolution	0.01A
Minimum Current Reading	50mA

10010i

Overall Dimensions	1.75" H x 19" W x 8.5" D
Weight	51.2 oz
Input Voltage Range	+/-2.5%
Current:	
Max, Total Continuous	100A
Max. Port Continuous	35A @ 25°C
Max Port @ 1 minute	40A @ 25°C
Operating w/Backlight	160mA
Operating no Backlight	150mA

ADDITIONAL RESOURCES

Go to our support page for more assistance:

<http://www.westmountainradio.com/supportrr.htm>

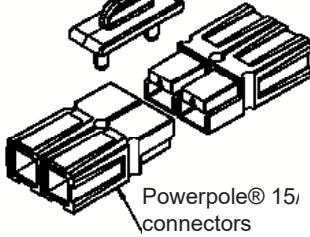
Go to our OpTips page for connection tips:

<http://www.westmountainradio.com/optipsrr.htm>

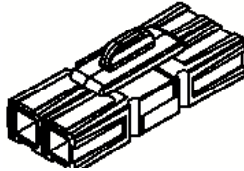
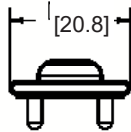
Anderson Power Products® and Powerpole® is a registered trademark of Anderson Power Products, Inc.

Retention Clip Instructions for use with Horizontal RIGrunners

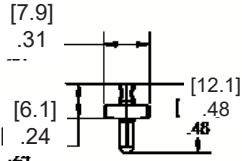
Retention Clip
(sku# 58257-1092)



Powerpole® 15i
connectors



[[mm] Toler: +- 0.5
inch Toler: +- 0.02



RIGrunner 4005i & 10010i Warranty

RIGrunner 4005i is warranted against failure due to defects in workmanship or materials for one year after the date of purchase from West Mountain Radio. Warranty does not cover damage caused by abuse, accident, misuse, improper or abnormal usage, failure to follow instructions, improper installation, alteration, lightning, or other incidence of excessive voltage or current. If failure occurs within this period, return the *RIGrunner 4005i* or accessory to West Mountain Radio at your shipping expense. The device or accessory will be repaired or replaced, at our option, without charge, and returned to you at our shipping expense. Repaired or replaced items are warranted for the remainder of the original warranty period. You will be charged for repair or replacement of the *RIGrunner 4005i* or accessory made after the expiration of the warranty period.

West Mountain Radio shall have no liability or responsibility to customer or any other person or entity with respect to any liability, loss, or damage caused directly or indirectly by use or performance of the products or arising out of any breach of this warranty, including, but not limited to, any damages resulting from inconvenience, loss of time, data, property, revenue, or profit, or any indirect, special incidental, or consequential damages, even if West Mountain Radio has been advised of such damages.

Except as provided herein, West Mountain Radio makes no express warranties and any implied warranties, including fitness for a particular purpose, are limited in duration to the stated duration provided herein.



www.westmountainradio.com
1020 Spring City Drive, Waukesha, WI 53186
tel 262-522-6503 fax 262-522-6504