

RIGblaster pro Quick Start Instructions

Make your first contact in under 30 minutes!

If you are new to sound card operation start here.

This is **NOT** meant to be a substitute for reading our instruction manual included with the pro or reading the help files that come with software. This Quick Start is only intended to get you on the air with one program and one mode using a basic hookup.

PROCEED IN ORDER, STEP BY STEP! READ THE MANUAL FOR MORE HELP.

1. INSTALL SOFTWARE AND START RECEIVING: You do not need the RIGblaster pro to receive so leave it in the box!

Insert our CD in your CD ROM drive. The West Mountain Radio screen should pop up in a few seconds.

From our screen click the "XMIT" button for: "West Mountain Radio RIGblaster Software Collection".

Click the "XMIT" button for "PSK31". PSK31 is an easy and popular mode to get started with.

Click the "XMIT" button for "Digipan for Windows". Follow the installation prompts that appear on your screen to install Digipan. Digipan is an easy program to start with, this Quick Start is written specifically for Digipan.

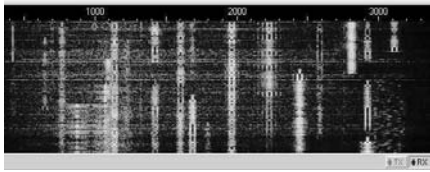
Close the West Mountain Radio CD Window and put the West Mountain Radio CD in a safe place.

Digipan is now installed. From Windows click, "Start", "Programs", "Digipan". Digipan should be on your screen within seconds.

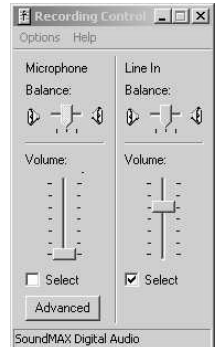
From the Digipan window and click "Configure", "Personal Data". Enter your call, name and QTH.

Using one of the supplied mini plug cables, connect the speaker output of your radio to the line input (mic. on a laptop) of your computer. Three other receive connection options through the RIGblaster are described in our manual, the direct connection is the easiest but has some trade offs.

Tune your radio to 14.070 MHz USB. You should always be able to hear PSK31 signals on this frequency with any suitable antenna.



Double click the little yellow speaker icon in the lower right corner of your Windows screen. You will get the Windows sound playback control panel. From there click "Options", "Properties", "Recording" and "OK" to go to the recording control panel, shown to the right. With your mouse, turn up the "Line In" slider (or "Microphone In" on a laptop) about half way and "Select" that input as shown. Turn up your radio's volume control to the 9 or 10 o'clock position or until you see a blue background with yellow signal tracks on the DigiPan waterfall display as shown to the left.



To tune in a station with DigiPan, simply clicking on the center of a clear strong waterfall track. You will receive that station's text in DigiPan's upper text window. Try clicking on other stations, you can tune in any of them without touching your radio.

***** YOU ARE HALF WAY TO MAKING YOUR FIRST QSO! *****

You may listen to signals from your radio through your computer speakers by double clicking the little yellow speaker icon and using the playback control panel, it says "Volume Control" in the top left corner of that window. Set the master ("Volume") slider, the "Line In" slider and your computer speakers volume control for a comfortable level without changing the volume control on your radio. Note: you must un-"Mute" or "Select" those outputs.

See our manual for options to connect receive audio through the RIGblaster pro. If you do that now double check your receive audio. If you use a line output instead of the speaker output from your radio you may have to reset the sound card via it's recording control panel.

Read "The In's and Out's of a Sound Card" from QST, Oct 2003, online at: <http://www.westmountainradio.com/pdf/Ins&Outs.pdf>.

Tip: You may also access the sound card recording and playback control panels from DigiPan by clicking "Configure", "Waterfall drive..." or "Transmitter drive..." respectively.

Tip: If you have any problem read the Digipan program "Help" on-screen, our manuals do not cover software operation. All software comes with its own specific documentation. Check your antenna, mouse tuning, speaker connections and sound card settings if you do not receive PSK31 signals.

Continue to the next step only after you have confirmed that you are receiving and you have completed this step.

2. SET THE RIGblaster MIC. JUMPERS: For this Quick Start DO NOT remove or change any RIGblaster jumpers on P5, 6, 16 that are supplied already installed. You simply need to plug in the microphone jumpers on P1 (28 pin jumper block) to match your radio's mic. See the microphone jumper diagrams in our manual for the correct diagram. If you are curious about other jumpers, read our manual, you can set up the RIGblaster for virtually any operation.

Connect the RIGblaster mic. cable to your radio, the wall cube power supply, and plug in your mic. Turn on the RIGblaster Pro and make sure the process switch is off. The green power LED should light and the green "mic." LED should be on.

Confirm that EVERYTHING on your mic. works perfectly, including on-the-air audio reports. If your mic. works perfectly that should confirm that the mic.

jumpers are installed correctly.

If you have a problem, make sure that you have used the jumper diagram that matches your mic., not necessarily your radio. After market mics., especially Yaesu, may not have exactly the same wiring as the original mic. Yaesu mics. are wired either with a single wire for PTT and mic. audio or they have separate wires. If you have a radio with common PTT and mic. grounds you MUST have a "GNDTIE" jumper installed. Don't forget the blue shunt jumpers!

If, and only if, your mic. works perfectly, continue to the next step.

3. CONNECT A SERIAL CABLE: Use the supplied serial cable, connect between an available (unused) serial port on your computer and the RIGblaster Pro's "SERIAL/COM RS232 IN/OUT A". Do not use "SERIAL/COM RS232 IN/OUT B" at this time.

Boot up your computer with the RIGblaster on and the process switch off. Watch both the red "ptt" LED on the RIGblaster and the transmit indicator on your radio. During the boot up sequence you should see both lights turn on at least once. Other lights may also light, that is OK.

This test confirms that the cable, the computer, and the RIGblaster are working properly together, a complete hardware test.

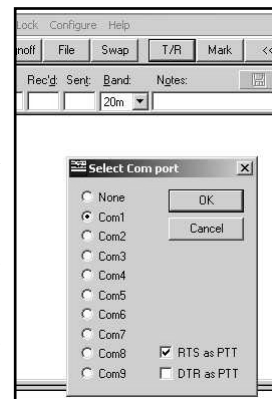
After the boot up is completed those lights should be off. If they are not, you have a Windows software problem! This problem has nothing to do with a RIGblaster you would have it no matter what brand of interface you might have. Try our RIGblaster support page for "Stuck in Transmit" Windows software help.

**If this check is OK it confirms that all of your hardware is working!
If and only if this test is correct continue to the next step.**

4. AUTO SERIAL CONTROL SET UP AND TEST: Start DigiPan, from the DigiPan window click "Configure", "Serial port..." and select the Com port check box that corresponds to the serial port that you have your RIGblaster connected to. You should uncheck DTR and leave RTS checked as shown to the right. The RIGblaster Pro is set by default to use RTS for PTT and DTR for CW. **Note:** newer versions of DigiPan, than on our V 6.0 CD are different and will activate CW along with PTT.

From DigiPan, press F9 or click the T/R button, this puts DigiPan into transmit. The "ptt" LED on the RIGblaster should go on and your radio should go to transmit. RF will not come out of your radio but you should hear the PSK31 tones coming from your computer speakers. We have not connected the transmit audio to the RIGblaster yet so there is no audio drive, that's next.

If nothing happens when you select transmit go back and try ALL of the other serial port choices within DigiPan starting with number 1 until you find the correct port number. DigiPan will either start working when you find the right one, will do nothing at all, or tell you that the serial port is not available.



Continue to the next step only if you have serial PTT control working.

5. CONNECT TRANSMIT AUDIO: Connect a STEREO audio cable from your sound card line output (laptop headphone output) to the RIGblaster's "COMPUTER: AUDIO" "LINE IN". You must unplug a desktop computer's speakers to do this. Plug your computer speakers back in to the RIGblaster's "COMPUTER: AUDIO" "LINE OUT" jack so that they operate as they did before.

6. SET THE AUDIO LEVEL FOR TRANSMIT: Turn off your radio and from DigiPan, press F9 or click the T/R button putting DigiPan in to transmit. This should light the PTT LED on the Pro and you may hear the PSK31 tones coming from your computer speakers, if they are too loud turn them down not your sound card.

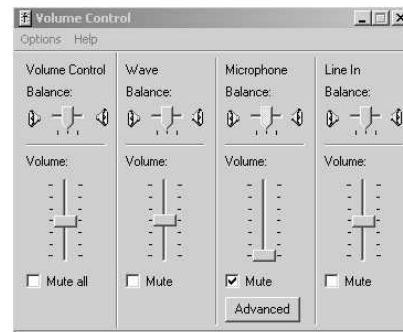
Open your Windows sound playback panel (double click the yellow speaker icon) un-"Mute" or select the "Wave" output and the far left hand master "Volume Control". Set the virtual "Volume" sliders about half way up as shown on the right. Watch the RIGblaster "level" LED and turn the "Wave" "Volume" slider down until the PSK31 tone from DigiPan causes the light to go out, then turn it back up until it is about one notch past the light just coming on.

Tip: Set the virtual balance sliders to the center.

From DigiPan go back to receive with "F9" or the "T/R" button.

Turn your radio on. Leave your radio's mic. gain at its normal setting, your speech compressor off, and the transmitters RF drive (power control) turned all the way up.

Set the RIGblaster's audio level control is all the way down (full CCW) and put DigiPan back into transmit. The RIGblaster "level" LED should be lit. Turn up the RIGblaster's audio level control up until your radio shows LESS than full power. Never operate at full power always safely and cleanly below.



YOUR ARE ON THE AIR, HOPEFULLY UNDER 30 MINUTES. CALL CQ OR ANSWER SOMEONE ELSE'S CQ, BEST DX, HAVE FUN!

It is obvious that this is just a Quick Start guide. There are many more things you can do with the Pro. The steps and procedures for ALL sound card software programs are similar to DigiPan. The basic hookup outlined here is required for sound card operation, CW, FSK or rig control require other connections.

You must read our manual for CW, FSK, rig control or transmit speech processing. The manual also describes other ways to connect receive audio.

The software help contained in this Quick Start guide is just to get your started. Normally software help is not available from us as we do not write software. Software comes with its own manual in the form of on-screen or on-line help files, read me files, or tutorials. You must read the manuals for your software if you expect to understand it and make it work properly. If you cannot find what you need by pushing F1 or clicking on "Help" go to the software authors web page or send an email to the author of the software.