

RIGblaster Pro Quick Start Instructions

Make your first contact in under 30 minutes!

If you are new to sound card operation start here.

This is **NOT** meant to be a substitute for reading our instruction manual included with the pro or reading the help files that come with the software. This Quick Start is only intended to get you on the air with one program and one mode using the most basic hookup.

PROCEED IN ORDER, STEP BY STEP! READ THE MANUAL FOR MORE HELP.

1. INSTALL SOFTWARE AND START RECEIVING: You do not need the RIGblaster pro to receive so leave it in the box!

Insert our CD in your CD ROM drive. The West Mountain Radio screen will pop up in a few seconds.

From our screen click the "XMIT" button for the "West Mountain Radio RIGblaster Software Collection".

Click the "XMIT" button for "PSK31". PSK31 is an easy mode to get started with.

Click "XMIT" for "Digipan for Windows". Digipan is an easy program to start with and this Quick Start is written only for Digipan. Follow the installation prompts that appear on the screen to install Digipan.

Close the West Mountain Radio Window and put the West Mountain Radio CD in a safe place.

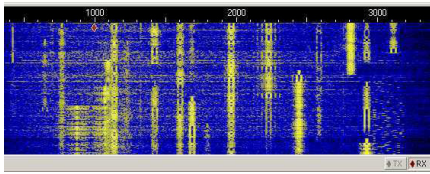
Digipan is now installed. From Windows click, "Start", "Programs", "Digipan". Digipan will be on your screen in seconds.

From the Digipan window and click "Configure", "Personal Data" and enter your call, name and QTH.

Using one of the supplied mini plug cables, connect the speaker output of your radio to the line input (mic. on a laptop) on your computer. Three other connection options that you may use later are described in our manual.

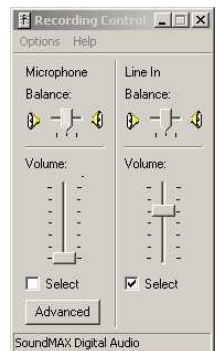
Tune your radio to 14.070 MHz USB. You should always hear PSK31 signals on this frequency with any suitable antenna.

Double click the little yellow speaker icon in the lower right corner of your Windows screen. You will get your Windows sound playback control panel. Click "Options", "Properties", "Recording" and "OK" to get the recording control panel as shown to the right. With your mouse, turn up the "Line In" slider (or "Microphone In" on a laptop) about half way and "Select" that input as shown. Turn up your radio's volume control to the 9 or 10 o'clock position or until you see a blue background with yellow signal tracks on the DigiPan waterfall display as shown to the left.



You tune in a station with DigiPan by simply clicking on the center of a clear strong waterfall track. You will then receive that station's text in DigiPan's upper text window. Try clicking on several other stations, you can tune in many of them without touching your radio.

******* YOU ARE HALF WAY TO BEING ON THE AIR!*******



You may listen to the PSK31 signals from your radio through your computer speakers by double clicking the little yellow speaker icon and using the playback control panel, it says "Volume Control" in the top left corner of that window. Set the master ("Volume") slider, the "Line In" slider and your computer speakers volume control for a comfortable level without changing the volume control on your radio. You must un-"Mute" those outputs.

See our manual for your option to connect the receive audio from your radio through the RIGblaster pro. Do that now and check your receive audio again. If you use a line output instead of the speaker output from your radio you may have to reset the sound card via it's recording control panel.

Tip: You may also access the sound card recording and playback control panels from DigiPan by clicking "Configure", "Waterfall drive..." or "Transmitter drive..." respectively.

Tip: If you have any problem read the Digipan program "Help" on-screen, our manuals do not cover software operation. Software comes with its own specific documentation. Check your antenna, mouse tuning, speaker connections and sound card settings if you do not receive signals.

Continue to the next step only after you have confirmed that you are receiving and you have completed this step.

2. SET THE RIGblaster MIC. JUMPERS: For this Quick Start DO NOT remove or change any RIGblaster jumpers on P5, 6, 16 that are supplied already installed. You simply need to plug in the microphone jumpers on P1 to match your radio's mic. See the microphone jumper diagrams in our manual for the correct diagram. If you are curious about the other jumpers read our manual, you can set up the RIGblaster for virtually any operation.

Connect the RIGblaster mic. cable to your radio, the wall cube power supply, and plug in your mic. Turn on the RIGblaster Pro and make sure the process switch is off. The green power LED should light and the green "mic." LED should be on.

Confirm that EVERYTHING on your mic. works perfectly, including on-the-air audio reports. If your mic. works perfectly you probably have confirmed that the jumpers are installed correctly.

If you have a problem, make sure that you have used the jumper diagram that matches your mic., not necessarily your radio. After market mics., especially Yaesu, may not have exactly the same wiring as the original mic. Yaesu mics. are wired either with a single wire for PTT and mic. audio or they have separate wires. If you have a radio with common PTT and mic. grounds you MUST have a "GNDTIE" jumper installed.

If, and only if, your mic. works perfectly, continue to the next step.

3. CONNECT A SERIAL CABLE: Use the supplied serial cable for a connection between an available (unused) serial port on your computer and the RIGblaster Pro's "SERIAL/COM RS232 IN/OUT A", do not use "SERIAL/COM RS232 IN/OUT B" at this time.

Boot up your computer with the RIGblaster on and the process switch off. Watch both the red "ptt" LED on the RIGblaster and the transmit indicator on your radio. During the boot up sequence you should see both lights turn on at least once. Other lights may change also, that is OK.

This test confirms that the cable, the computer, and the RIGblaster are working properly together, a hardware test.

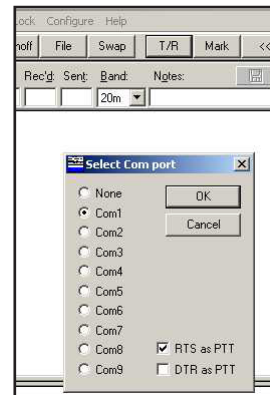
After the boot up is completed the lights should be off. If they are not off you have a Windows software problem! You would have this problem no matter what brand of interface you might have. See our RIGblaster support page to find links for Windows software help.

**If this check is OK it confirms that all of your hardware is working!
If and only if this test is correct continue to the next step.**

4. AUTO SERIAL CONTROL SET UP AND TEST: Start DigiPan, from the DigiPan window click "Configure", "Serial port..." and select the Com port check box that corresponds to the serial port that you have your RIGblaster connected to. You should uncheck DTR and leave RTS checked as shown to the right. The RIGblaster Pro is set by default to use RTS for PTT and DTR for CW.

From DigiPan, press F9 or click the T/R button, this puts DigiPan into transmit and it should light the "ptt" LED on the Pro and put your radio in to transmit. No RF will come out of your radio but you may hear the PSK31 tones coming from your computer speakers, because we have not connected the transmit audio to the RIGblaster yet, that's next.

If nothing happens when you select transmit go back and try all of the other serial port choices within DigiPan starting with number 1. DigiPan will either start working when you find the right one, will do nothing at all, or tell you that the serial port is not available.



Continue to the next step only if you have serial PTT control working.

5. CONNECT TRANSMIT AUDIO: Connect a STEREO audio cable from your sound card line output (laptop headphone output) to the RIGblaster's "COMPUTER: AUDIO" "LINE IN". You must unplug a desktop computer's speakers to connect this. Plug your computer speakers back in to "COMPUTER: AUDIO" "LINE OUT" so that they operate as they did before.

6. SET THE AUDIO LEVEL FOR TRANSMIT: Turn off your radio and from DigiPan, press F9 or click the T/R button, this puts DigiPan in to transmit. This should light the PTT LED on the Pro and you may hear the PSK31 tones coming from your computer speakers. Turn your computer speakers down if they are too loud.

Open your Windows sound playback panel (double click the yellow speaker icon) un-"Mute" the "Wave" output and the far left hand "Volume Control" output and set the virtual "Volume" sliders to about half way up as shown on the right. Watch the RIGblaster "level" LED and turn the "Wave" "Volume" slider down until the PSK31 tone from DigiPan causes the light to go out, turn it back up until it is about one notch past the light just coming on.

Tip: Also set the virtual balance sliders to the center.

From DigiPan go back to receive with "F9" or the "T/R" button.

Turn your radio on. Leave your radio's mic. gain at its normal setting, your speech compressor off, and the transmitters RF drive (power control) turned all the way up.

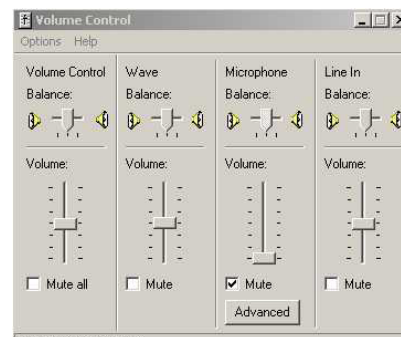
Set the RIGblaster's audio level control is all the way down (full CCW) and put DigiPan back into transmit. The RIGblaster "level" LED should be lit. Turn up the RIGblaster's audio level control up until your radio shows LESS than full power. Never operate at full power always slightly below.

YOUR ARE ON THE AIR, HOPEFULLY UNDER 30 MINUTES. CALL CQ OR ANSWER SOMEONE ELSE'S CQ, GOOD DX AND HAVE FUN!

It is obvious that this is written just as a Quick Start guide. There are many more things you can do with the Pro. The steps and procedures for ALL sound card software are similar to DigiPan. The basic hookup outlined here is only what is essential for sound card software operation.

You especially need to read our manual for CW, FSK, rig control and transmit speech processing. The manual also describes other ways to hook up your receive audio.

The software help contained in this Quick Start guide is just to get your started. Normally software help is not available from us as we do not write software. Software comes with its own manuals in the form of on-screen or on-line help files, read me files, or tutorials. You must use the manuals for your software if you expect to understand it and make it work completely. If you cannot find what you need by pushing F1 or clicking on "Help" go to the software authors web page or send an email to the software author.



1020 Spring City Drive
Waukesha, WI 53186
Sales: 262-522-6500 x35 Tech Support: 262-522-6503 x32